

International Journal of Innovative Research in Science, Engineering and Technology

(A High Impact Factor, Monthly, Peer Reviewed Journal)

Visit: www.ijirset.com

Vol. 7, Issue 3, March 2018

Internet of Things based Energy Efficient Home Automation System

Vishal Dineshkumar Soni

Department of Information Technology, Campbellsville University, Campbellsville, Kentucky

ABSTRACT: Progression in IoT-based application has become the cutting-edge innovation among the analyst because of Internet access. To make the application easier to understand, electronic and android based designs have picked up their significance in this front line innovation. In this paper, an intellectual vitality productive home automation framework is suggested to access and control the home types of gear from each side of the world. For this framework, the Internet network module is appended to the fundamental gracefully unit of the home framework that can be gotten through the Internet. For a remote network, the static IP address is utilized. Home automation depends on a multimodal application that can be worked using the client's voice acknowledgment order utilizing the Google Assistant or an online application. Accordingly, the fundamental goal of this work is to make our home automation framework safer and astute.

KEYWORDS: Home Automation, IFTTT, Adafruit, Internet of Things (IoT), Node MCU(ESP8266), Voice Control, Smartphone.

I. INTRODUCTION

The Internet of Things is the interconnection of the different processing gadgets installed in the day by day machines to the Internet, empowering them to speak with one another. This upgrades the end clients personal satisfaction and to improve productivity and manageability in the everyday exercises. In no time, a significant number of awesome gadgets will impart over IoT. After not many, a more considerable number of years, more than twenty billion devices are associated with the Internet of Things as we move toward that esteem. We are facing a daily reality such that it is quickly advancing concerning automation. Automation is the capacity to plan occasions for the gadgets associated with the nearby system or the Internet through time-related or boost set off projects. From huge ventures to little offices, the idea of automation is being executed to decrease human mediation and improve vitality, effectiveness, and profitability. Home automation or domestics is the way toward mechanizing the different apparatuses inside a house, consequently changing it into an excellent place. It includes the automation of warming, lighting, ventilation, watering the nursery just as a security framework, and different inserted framework gadgets associated with the Internet. Another essential quality of the current age of home automation is the far off checking and access of the robotized apparatuses, advancing smartphones and tablets, and improved correspondence innovations like WiFi and Bluetooth. We have picked up the capacity to interface with our home system while we are away in reality. There are numerous focal points related to home automation. One of the effectiveness of interest is the massive potential for vitality protection and cost sparing. IoT applications are not restricted to one specific field. It has indicated the critical commitment from little scope applications to the enormous scope applications, for example, E-commerce [1], Coal Mine [2], Wearable gadget, Smart Framework, Laboratory Monitoring, Agriculture [3], and numerous different areas. However, we have gotten tremendous improvement in innovation. Yet, power utilization is one of the broad issues everywhere on over the world. According to the report, the Information and Correspondence Technologies (ICT) alone uses 4.7% of the world's power, prone to be expanded to 10% accounts.

International Journal of Innovative Research in Science, Engineering and Technology

(A High Impact Factor, Monthly, Peer Reviewed Journal)

Visit: www.ijirset.com

Vol. 7, Issue 3, March 2018

II. SYSTEM ARCHITECTURE

Automation System can be gotten from the internet browser of any nearby LAN utilizing worker IP or distantly from any PC or gadget associated with the Internet with a fitting internet browser through the worker's real IP address. WiFi is chosen to be the system framework that interfaces workers with the sensors[4]. WiFi improves framework security (by utilizing secure WiFi association), and is valuable to expand framework portability and versatility. In this framework, we execute some security highlights like movement location outside the house during a bizarre time like night. Some vicinity sensors and alerts should be introduced outside the home and customized to trigger the caution when somebody crosses the boundary. As interest for power is expanding step by step, in this manner, keen home is the up and coming region of examination to give the distant admittance to controlling the home machine utilizing IoT. IoT based application has likewise blasted old matured individuals and individuals with a few kinds of handicap [5]. This permits the client to control the home automation gadget, such as a fan, bulb, and so forth, without making any physical association.

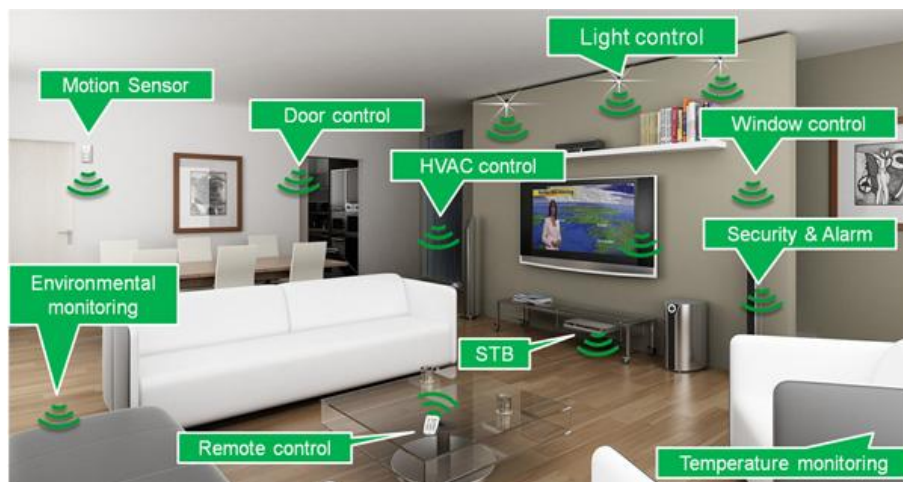


Fig1: Home Automation

Home automation utilizing MQTT is introduced in for sending/accepting information from the sensor. For this, Raspberry pi is used as a passage for getting to the sensor's data, which is utilized to gauge the room's temperature and stickiness. Another home automation framework is introduced in which depends on Raspberry pi, and the client can control their home machine using the online interface. In-home automation utilizing portable is accounted for in which framework is planned to utilize ZigBee[6]. We create an IoT-based home automation framework that uses voice just as electronic help to control the home apparatus with this inspiration. Likewise, for security reasons, the client characterizes order is set, which empowers to work the framework.

III. IMPLEMENTATION

Automation System can be gotten from the internet browser of any nearby LAN utilizing worker IP or distantly from any PC or gadget associated with the web with a fitting internet browser through the worker's real IP address. WiFi is chosen to be the organization's infrastructure that interfaces workers with the sensors. WiFi improves framework security (by utilizing secure WiFi association), and is valuable to expand framework portability and adaptability. In this framework, we are actualizing some security highlights like movement discovery outside the house during an unordinary time like night. Some nearness sensors and alerts should be introduced outside the home and customized to trigger the caution when somebody crosses the limit. Discourse is one of the most significant sources of info utilized for man-machine interaction. Therefore, to make the smart home more comfortable to use, Google assistance alongside

International Journal of Innovative Research in Science, Engineering and Technology

(A High Impact Factor, Monthly, Peer Reviewed Journal)

Visit: www.ijirset.com

Vol. 7, Issue 3, March 2018

online application can be used to control the home framework. The upside of multimodal is that within sight of the boisterous foundation encompassing the presentation of the Google assistance debases. Henceforth, in such a situation, the online application can be useful in controlling the framework's apparatus. The proposed model is intended to give better adaptability and make the framework more hearty along these lines. Figure 1 shows the overall design of the smart home mechanization system [7]. As appeared in Figure 1, the smart home can be executed with a fundamental regulator unit (Main exchanging of the home circuit) associated with the 24-hour accessible WiFi network. To guarantee that the WiFi association doesn't kill, the principal regulator is customized to set up a programmed association with the available organization and associated with the auto power reinforcement.

System Requirement

- NodeMcu (ESP8266).
- IFTTT.
- Arduino Software (IDE)
- Adafruit

A. NodeMcu (ESP8266)

The ESP8266 is an ease WiFi chip with full TCP/IP stack and MCU capacity delivered by a Shanghai-based Chinese maker. The reduced ease size and the presence of an inbuilt WiFi module were the purposes behind choosing this microcontroller. This WiFi chip help to associate the Arduino board to the web and cloud worker and versatile application [8]. It also gives the Nodejs, requiring less calculation time to play out the errand and use Lua content. Consequently, it makes the gadget work a lot quicker, settling on it as the best IoT application option.

B. IFTTT

IFTTT means "If This, Then That" is an interface that gives the online assistance wherein gadgets are associated with the versatile application [10]. Hence, making it a lot simpler for the device to work dependent on the portable application utilizing the restrictive proclamations.

C. Arduino Software (IDE)

Arduino projects might be written in any programming language with a compiler that produces paired machine code. Atmel gives an advancement situation to their microcontrollers, AVR Studio, and the more up to date Atmel Studio. The Arduino venture provides the Arduino with coordinated improvement conditions (IDE), a cross-stage application written in Java[9]. It began from the IDE for the Processing programming language venture and the Wiring venture. It is intended to acquaint programming with specialists and different newcomers new to programming advancement. It incorporates a code supervisor with highlights, such as sentence structure featuring, support coordinating, and programmed space. It gives straightforward a single tick system for gathering and stacking projects to an Arduino board.

D. Adafruit

Adafruit is a library that underpins the MQTT (Message Queue Telemetry Transport). It goes about as an MQTT representative. MQTT depends on convention administration that gives the sending and getting of the feed data. MQTT's benefit is that it provides a quicker pace of transmission of the data and requires less data byte for the network. It requires 80 bytes for setting up the association between the gadget to the worker and 20 bytes from worker to device. Arduino IDE programming is utilized to arrange the code.

Working Models

The working of the smart home automation appears in Figure 2. As appeared, the beginning necessity is the Internet network to get to your smart home.

International Journal of Innovative Research in Science, Engineering and Technology

(A High Impact Factor, Monthly, Peer Reviewed Journal)

Visit: www.ijirset.com

Vol. 7, Issue 3, March 2018

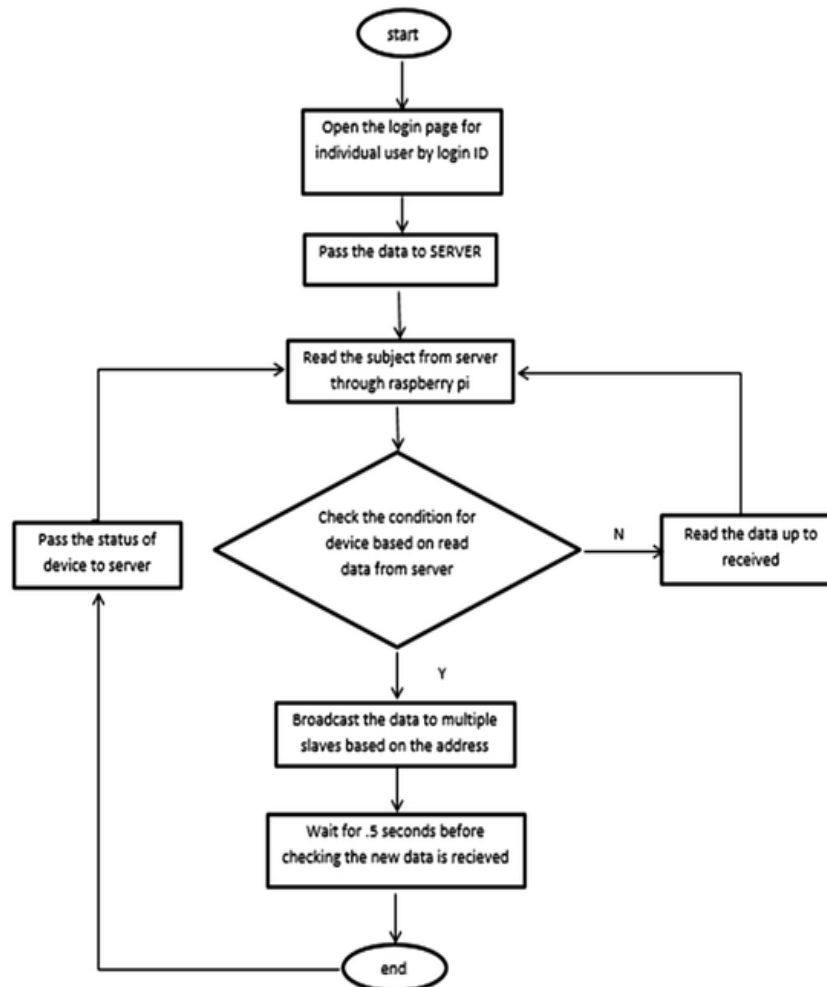


Fig 2:Flow chart of home automation

After the fruitful association, clients will have the option to get to their smart home apparatus utilizing an IFTTT explanation order. It will be brought to through the Adafruit for making the network between the Google aide and the NodeMCU, which is the central control unit of the smart home computerization. The home machine is associated with the primary regulator unit with the arrangements of hand-off. The elements of these transfers are to go about as an ON/OFF switch on the principle control unit. In this paper, we have indicated the case of the primary control unit that we have intended for your smart home.

International Journal of Innovative Research in Science, Engineering and Technology

(A High Impact Factor, Monthly, Peer Reviewed Journal)

Visit: www.ijirset.com

Vol. 7, Issue 3, March 2018

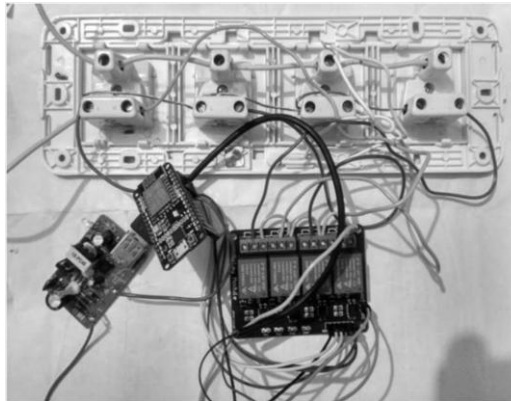


Fig 3:Internal architecture of the controller unit

Figure 3 shows the association of the principle unit with the NodeMcu. For the circuit's persistent activity, power reinforcement is additionally furnished with the assistance of a battery-powered battery. IoT home computerization dashboard created on Adafruit. At last, with the help of Google aide, the home machine can be turned ON/OFF with the planned framework's assistance in light of the client order. At long last, with the help of Google colleague, the home apparatus can be turned ON/OFF with the structured framework's assistance in light of the client order.

IV. CONCLUSION

This paper has introduced the bit by bit system of the smart home automation regulator unit. With the structure control unit's assistance, the home apparatus can be changed into an intelligent and astute gadget utilizing IoT. The working of the proposed model has tentatively appeared with the aid of interfacing the three bulbs. The proposed framework has two favorable circumstances. Using the IoT network, we can screen and access our smart home virtually from any place, ending up being vitality productive. Furthermore, it act has some assistance for the mature age and distinctively abled person. As an expansion, creators propose a conventional IoT system and use distributed computing infrastructure to associate and oversee far off gadgets and store sensor data.

REFERENCES

- [1] P. Damacharla, A. Y. Javaid, J. J. Gallimore, and V. K. Devabhaktuni, "Common Metrics to Benchmark Human-Machine Teams (HMT): A Review," *IEEE Access*, vol. 6, pp. 38637-38655, 2018.
- [2] Karunakar Pothuganti, Aredo Haile, Swathi Pothuganti, "A Comparative Study of Real Time Operating Systems for Embedded Systems" *International Journal of Innovative Research in Computer and Communication Engineering*, Vol. 4, Issue 6, June 2016.
- [3] Nikhil Singh, Shambhu Shankar Bharti, Rupal Singh, and Dushyant Kumar Singh, "Remotely controlled home automation system," in *Advances in Engineering and Technology Research (ICAETR)*, 2014 International Conference on. 2014, pp. 1-5, IEEE.
- [4] Vishal Dineshkumar Soni. (2018). IOT BASED PARKING LOT. *International Engineering Journal For Research & Development*, 3(1), 9. <https://doi.org/10.17605/OSF.IO/9GSAR>
- [5] Z. Xu, R. Wang, X. Yue, T. Liu, C. Chen, and S. Fang, "Face ME: Face-to-Machine Proximity Estimation Based on RSSI Difference for Mobile Industrial Human Machine Interaction," in *IEEE Transactions on Industrial Informatics*, vol. 14, no. 8, pp. 3547-3558, Aug. 2018.
- [6] Vishal Dineshkumar Soni. (2018). An IoT Based Patient Health Monitoring System. *International Journal on Integrated Education*, 1(1), 43-48. <https://doi.org/10.31149/ijie.v1i1.481>



ISSN(Online): 2319-8753
ISSN (Print): 2347-6710

International Journal of Innovative Research in Science, Engineering and Technology

(A High Impact Factor, Monthly, Peer Reviewed Journal)

Visit: www.ijirset.com

Vol. 7, Issue 3, March 2018

- [7] O. Benderius, C. Berger and V. Malmsten Lundgren, "The Best Rated Human Machine Interface Design for Autonomous Vehicles in the 2016 Grand Cooperative Driving Challenge," in IEEE Transactions on Intelligent Transportation Systems, vol. 19, no. 4, pp. 1302-1307, April 2018
- [8] Y. Kung, S. Liou, G. Qiu, B. Zu, Z. Wang and G. Jong, "Home monitoring system based internet of things," 2018 IEEE International Conference on Applied System Invention (ICASI), Chiba, 2018, pp. 325-327.
- [9] Pothuganti, Karunakar, Jariso, Mesfin, Kale, Pradeep. 2017. A Review on Geo Mapping with Unmanned Aerial Vehicles. International Journal of Innovative Research in Computer and Communication Engineering. Vol. 5, Issue 1, January 2017.
- [10] E. Gelenbe and Y. Caseau, "The impact of information technology on energy consumption and carbon emissions," Ubiquity, Association for Computing Machinery (ACM) 2015 (June), pp. 1-15.